

N-fixing bacteria that works from within the plant,
applied in-furrow OR foliar, and across crops to supplement
nitrogen **where and when it's needed.**

envita[®]

MULTI YEAR DATA

 CORN

**8.3
BU/ACRE**

ADVANTAGE INCREASE
WHEN POSITIVE

82% POSITIVE RESPONSE

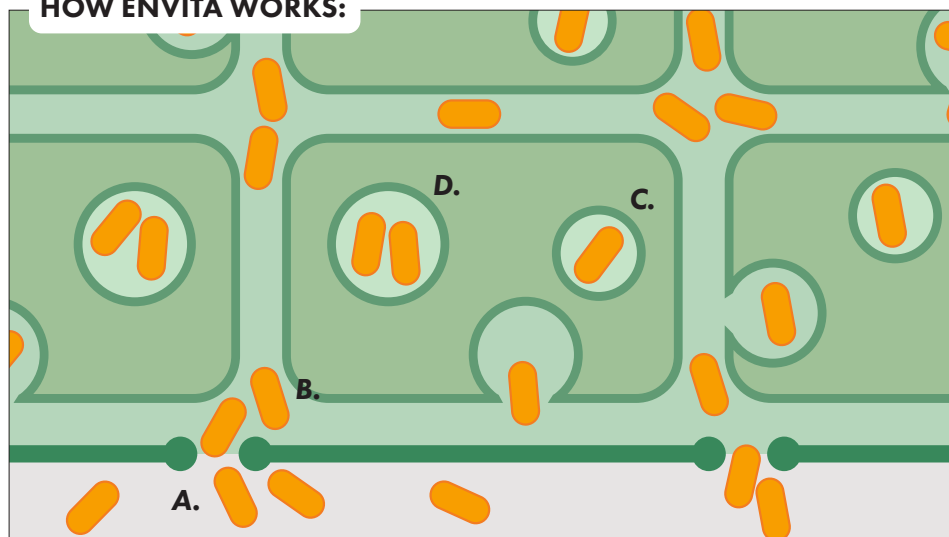
 SOYBEANS

**4.2
BU/ACRE**

ADVANTAGE INCREASE
WHEN POSITIVE

69% POSITIVE RESPONSE

HOW ENVITA WORKS:



- Envita enters the plant through the root zone (in-furrow application) or leaf stomata (foliar application)
- Envita bacteria works its way into the plant cell and colonies within the actual cell
- Envita bacteria creates small vesicles or "air pockets" within the plant cell that have the ability of capturing nitrogen from the atmosphere
- Envita repopulates within the cell

To learn more, visit yieldmastersolutions.com



MULTI CROP USE



Corn



Soybeans



Wheat



Alfalfa



Sugar Beets



Potatoes



Canola



Cotton



& MORE

APPLICATION RATES

In-furrow: 3.2 fl. oz. per acre
Foliar: 3.2 fl. oz. per acre

In-furrow Starter Fertilizer

Tank Mix Directions:

Compatible with most starter fertilizers. Always perform jar test to confirm mixture compatibility. For best results follow product mixing protocol listed below:

Step 1

Load starter fertilizer into application tank

Step 2

Load 1 - 2.5 gallons of water per acre into application tank. Low salt fertilizers require less water, while higher salt fertilizers such as 10-34-0 require higher levels of water to buffer the salt's impact on the bacteria.

Step 3

Load 3.2 ounces (1 gallon treats 40 acres) of Envita into the fertilizer/water mixture in the application tank.

DO NOT ADD ENVITA DIRECTLY INTO FERTILIZER BEFORE ADDING WATER.

* The amount of time Envita is mixed with fertilizer in a tank is critical to the success of the product. For best results apply mixture of fertilizer, water, and Envita within 4-6 hours.

Foliar Application Directions:

- Envita is compatible with most herbicides, insecticides, and fungicides. Perform a jar test to confirm compatibility.
- If possible avoid mixing with Group 4 herbicides, however Performance Guarantee will still apply if used with Group 4 herbicides.
- Apply Envita between the V2-V6 stage in corn & V2-V4 stage in soybeans.
- Apply Envita with 15-20 gallons per acre of water for best results.
- For more product handling and application recommendations, please see the Best Practices Guide

Packaging

4x1 gal



IMPACT *on* the PLANT

envita®

SEASON-LONG MODE OF ACTION

Bacteria create vesicles within the cells which capture atmospheric nitrogen providing season-long nitrogen nourishment.

BACTERIA ARE QUICK TO COLONIZE

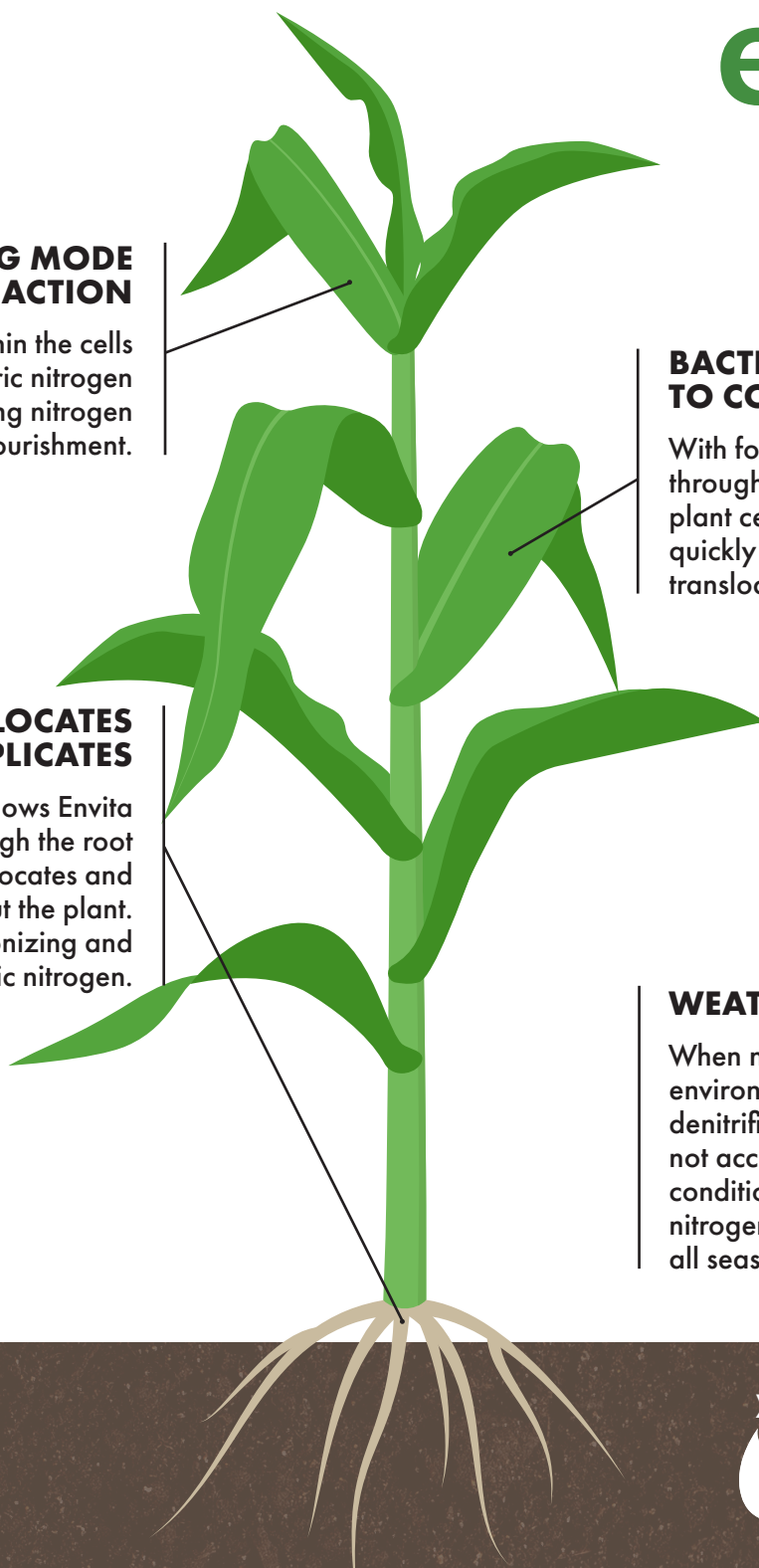
With foliar application, Envita enters through the leaf stomata and into the plant cells. From there, the bacteria quickly begin to colonize and translocate throughout the plant.

TRANSLOCATES & REPLICATES

In-furrow application allows Envita bacteria to enter through the root zone where it translocates and replicates throughout the plant. The bacteria begin colonizing and capturing atmospheric nitrogen.

WEATHERPROOF NITROGEN

When nitrogen is lost to the environment through leaching, denitrification, volatility, or is simply not accessible due to drought conditions, Envita is there to deliver nitrogen where and when it's needed all season long.



To learn more, visit
yieldmastersolutions.com

