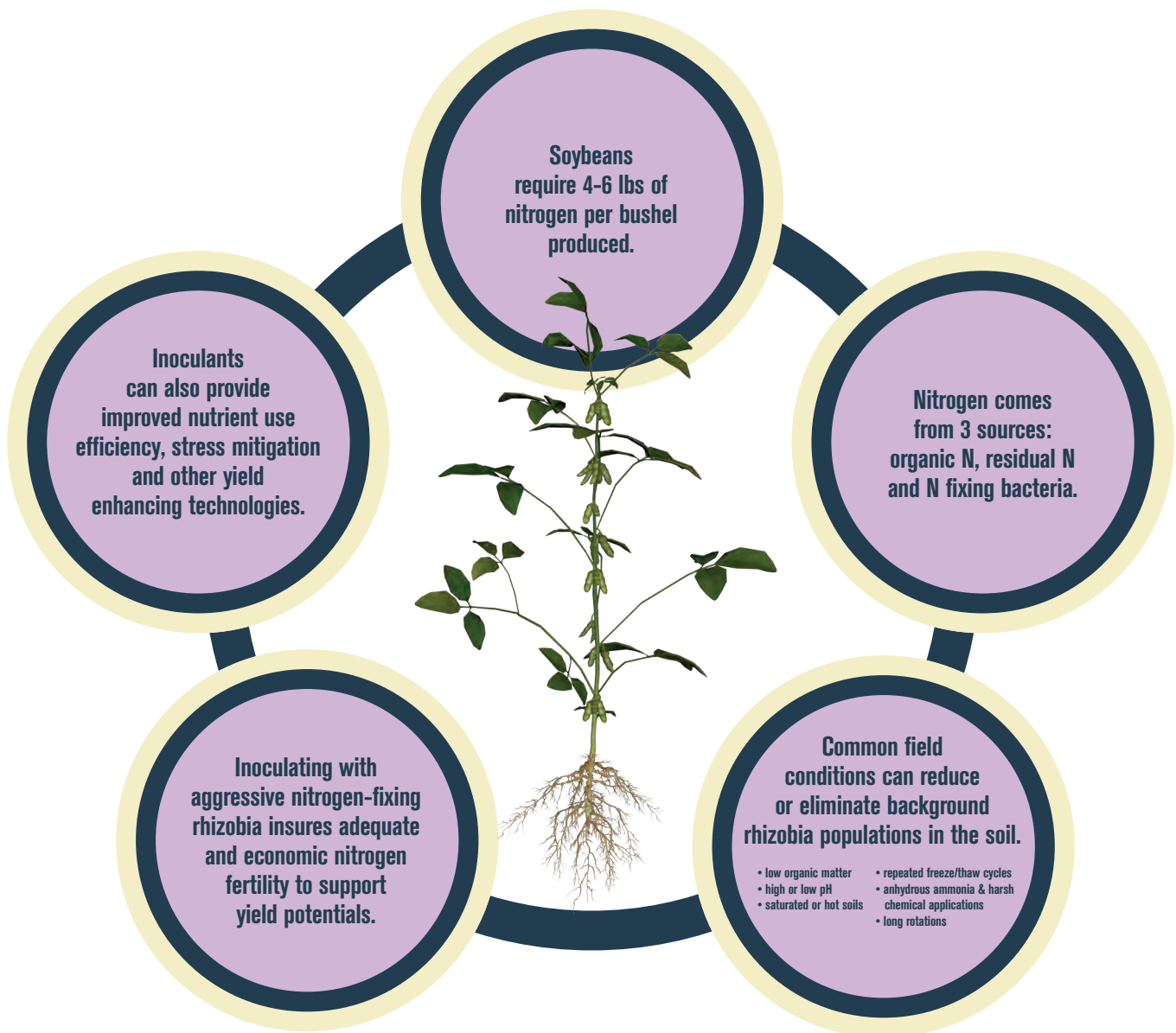




Open the door to more nitrogen and increased nodule mass.

PRESIDE CL[®]

Why Inoculate?



Why Use Preside CL?

Improve crop performance and yield potential with new **Preside CL**[®], a fast-mixing, easy-to-handle, highly concentrated liquid inoculant for soybeans. While encouraging abundant nodulation and nodule masses, the inoculant also enables more efficient use of nitrogen (N). By providing four times more rhizobia than the competition, Preside CL helps plants grow more nodes, which equals more sites for pods. **That means greater yield potential.**

