



**MULTI-CROP USE**

# Fortress+

**Fortress+ combines the bioactive foundation of Fortress with added potassium and key micronutrients (boron, manganese, zinc). It is formulated to support crop stress recovery, flowering success, and to drive pod fill and grain weight during reproductive stages.**



## KEY BENEFITS

- Builds on the flower retention and stress-mitigation benefits of Fortress
- Added potassium supports carbohydrate movement, pod/seed fill, and kernel weight
- Enriched with boron, manganese, and zinc to strengthen reproductive success and improve nutrient use efficiency

## IMPACT ON THE PLANT

- Enhances translocation of sugars and starches
- Supports strong pod fill and kernel weight
- Improves grain quality and consistency

## APPLICATION

**Can be applied throughout the crop lifecycle. For best results, target 32 oz/acre applications when potassium demand is highest**

### Corn

VT-R1 (tasseling to silking) through grain fill

### Soybeans

R1-R3 (flowering to early pod set)

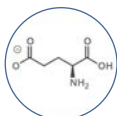
### Wheat/Small Grains

Flag leaf through early grain fill

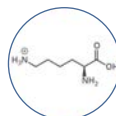
## PACKAGING

- 2.5 gal

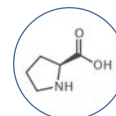
## KEY AMINO ACIDS



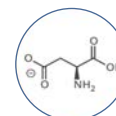
**Glutamic Acid**  
Chelates Micronutrients



**Lysine**  
Heat Stress Tolerance



**Proline**  
Drought Stress



**Aspartic Acid**  
Cold & Salt Stress



605-860-8534

@YIELDMASTERSOLUTIONS.COM

FOLLOW US ON

