



NueNutri[®]

NueNutri™ is an optimized liquid biostimulant containing vinasse, amino acids and essential micronutrients, to enhance crops' flowering periods and improve yield. NueNutri contains bioactive compounds that activate specific metabolic pathways, especially important at the pre-flowering stage, to enhance yield by reducing flower abortion and mitigating abiotic stress.

MULTI-CROP USE

KEY BENEFITS

- Stimulates plant metabolism to limit flower abortion and maximize yield
- Improves uniformity of crop
- Enhances nutrient use efficiency
- Reduces the effects of plant abiotic stress including drought, frost & high temperature

APPLICATION

32 ounces/acre

Corn

Apply from tasseling to grain fill

Legumes

Apply from pre-flowering to pod fill

Cereal Grains

Apply from flag leaf to tillering

Forage Crops

Apply 5-7 days after each cutting

PACKAGING

- 2.5 gal



To learn more, visit yieldmastersolutions.com

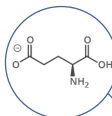
605-860-8534 |    

IMPACT ON THE PLANT

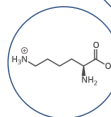
- Heat and Drought Tolerance: Enhances plants' resilience to extreme temperatures and water scarcity, improving survival rates under stress.
- Flower Retention: helps plants retain flowers longer, promoting better pollination and less flower abortion.
- Nutrient Use Efficiency: Improves nutrient uptake and utilization, allowing crops to grow more effectively with fewer inputs.
- Hormonal Pathway Activation: Stimulates plant hormonal pathways, boosting growth, development, and stress response mechanisms.

KEY AMINO ACIDS

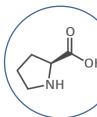
Glutamic Acid
Chelates
Micronutrients



Lysine
Heat Stress
Tolerance



Proline
Drought
Stress



Aspartic Acid
Cold & Salt
Stress

